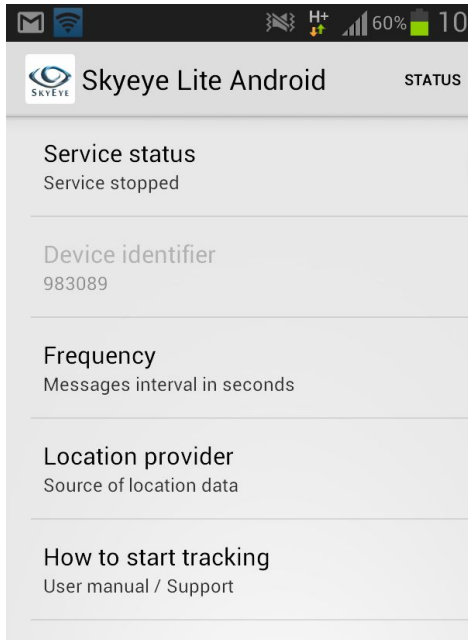
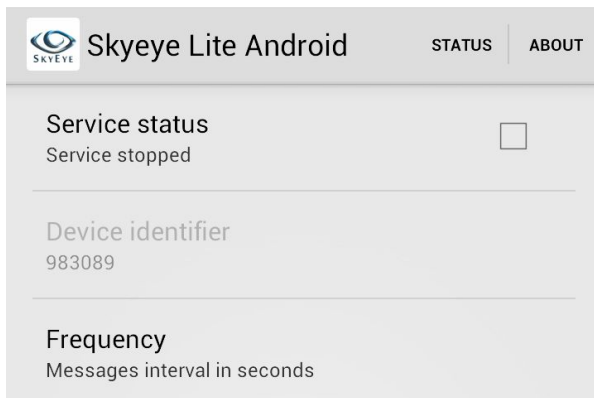


# Skyeye Lite Android Tracker Setup Manual 1.0

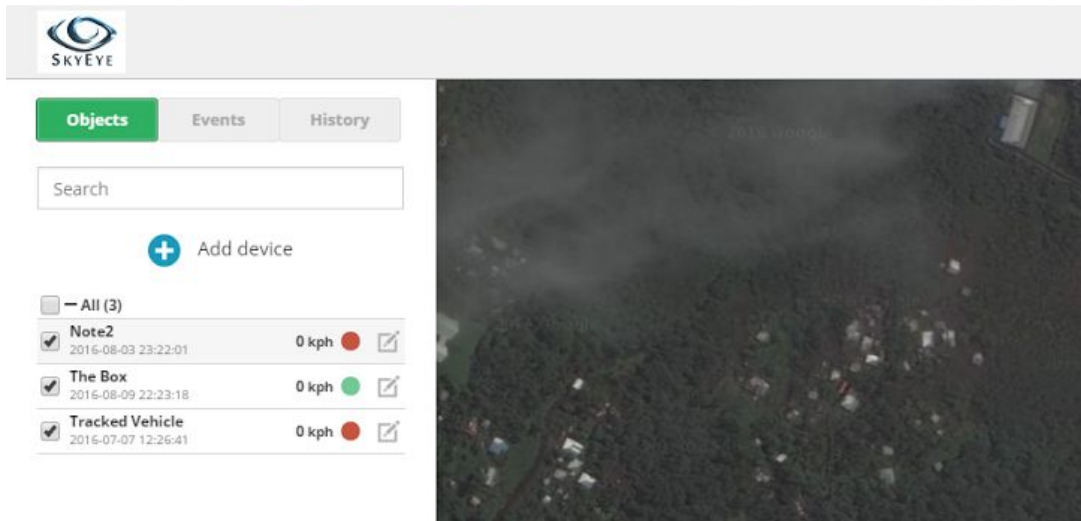
1. Install the app from the resource folder on skyeye website  
<http://www.skyeye.ws/resources.html>
2. Open the app and setup the app details
  - A. Frequency - The interval times for tracking e.g 30sec interval for every location report
  - B. Location Provider - Pick whether to use just GPS or Cell Network or both.
  - C. Note down the Device Identifier (very important) e.g. 983089 in this example.



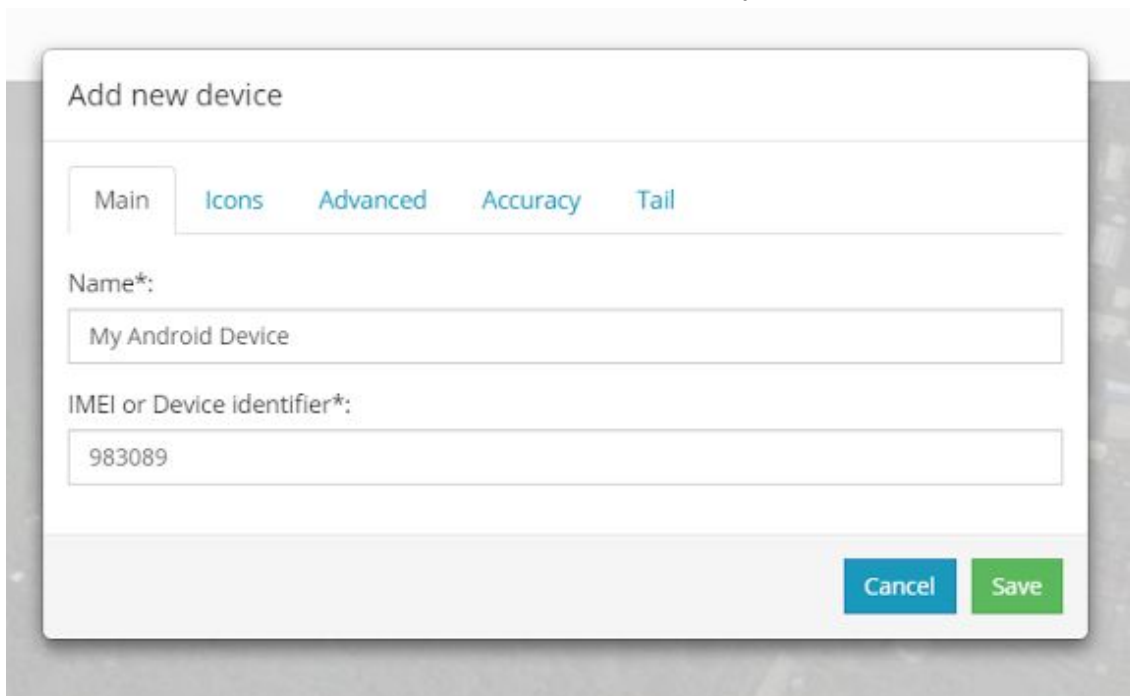
3. Start the application by clicking on the Service status tick box



4. Login to your Skyeeye Lite Account. <http://5.189.137.147/objects>
5. Add device



6. Enter in the device identifier from Step 2 C and name for your device



7. Save. Complete